

FOR LEASE

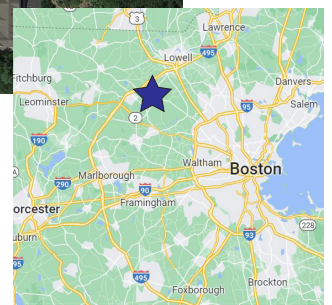
OFFICE & MEDICAL SPACE



2 Lan Drive, Westford

Property Highlights:

- Available Space
 - 1st floor: 2,699 RSF
 - 1st floor: 2,766 RSF
 - 2nd floor: 2,800 RSF
- Located just off I-495 on Route 110 (Littleton Rd.)
- 3.5/1,000 SF parking ratio
- Marriott Hotel in Park
- Countless nearby retail & dining amenities



Contact:

Tom Caldarone
George Robb

978.397.4227
857.891.7254

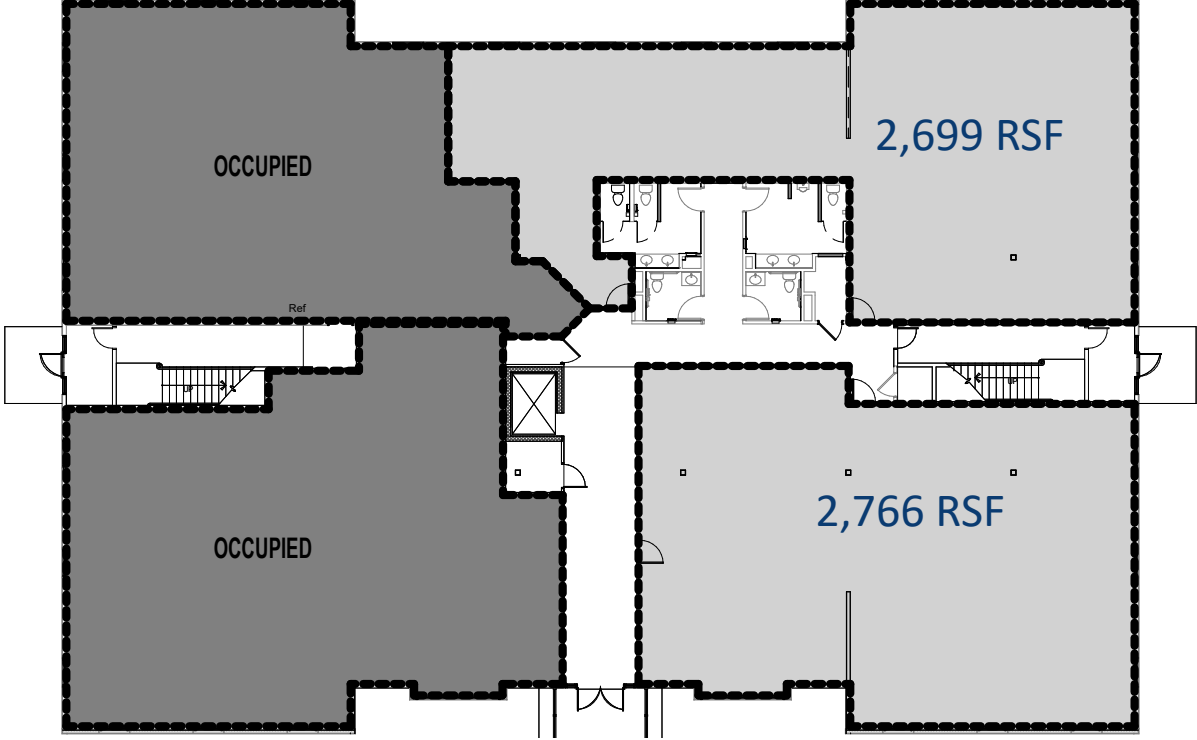
tom@omniproperties.com
grobbs@omniproperties.com



6 Lyberty Way, Westford MA 01886

2 Lan Drive Westford MA

First Floor



Second Floor

